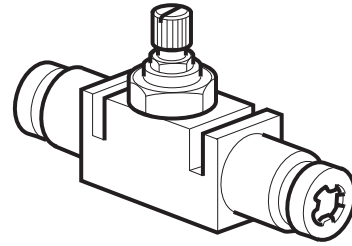


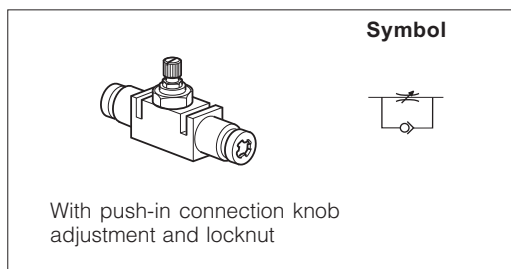
- For inline or surface mounting
- Manual adjustment by knob with lock nut
- Instant push-in fitting
- High flow
- Wide range of sizes



## Operating and additional information

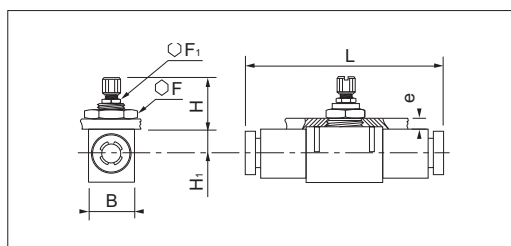
Operating pressure:	1 to 10 bar
Permissible fluids:	Air or neutral gas 50micron or filtration, lubricated or not
Flow:	See table below
Operating temperature:	-15°C to +70°C
Storage temperature:	-20°C to +70°C
Vibration resistance:	Conforming to section 19-2 of Bureau Veritas regulations
Body material:	Thermo plastic
Adjustment mode:	Knurled knob
Adjustment locking:	Hexagonal lock nut

## Main data for Speed Controls, PWR-L Series



Push-in connection	Adjustment angle	Qmax input at 6 bar, l/min*	Weight Kg	Order code
4	13	200	0,02	<b>PWR-L1444</b>
6	12	400	0,04	<b>PWR-L1466</b>
8	15	720	0,06	<b>PWR-L1488</b>
10	18	1360	0,13	<b>PWR-L1499</b>
12	20	1950	0,15	<b>PWR-L1411</b>

\* Screw closed



Type	B	F	F1	e	H+	H-	H1	L	Q
<b>PWR-L1444</b>	12,0	14	*	6	25,5	21,5	6,5	39,0	10,5
<b>PWR-L1466</b>	17,0	19	*	7	32,5	27,5	7,5	54,0	17,0
<b>PWR-L1488</b>	18,5	24	11	7	34,5	28,5	9,0	60,5	19,0
<b>PWR-L1499</b>	24,0	30	14	7	38,5	29,5	11,5	76,0	25,0
<b>PWR-L1411</b>	28,0	32	14	8	42,0	32,0	12,5	86,0	28,0