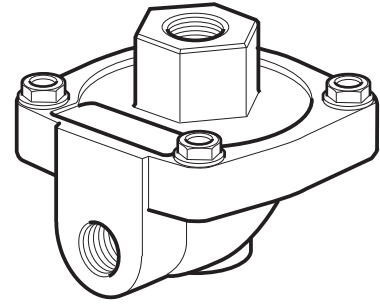


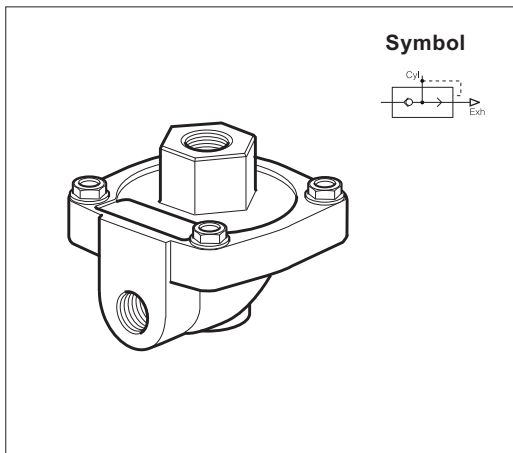
- Increases piston speeds, super sensitive diaphragm
- Extremely low operating differential
- Virtually stiction free
- May be used as differential shuttle valve
- High temperature option



Operating information

Operating pressure: 0,2 to 10 bar
 Operating temperature (Standard): -10°C to +80°C
 Operating temperature (High): -10°C to +180°C
 Body material: Aluminium
 Diaphragm material (Standard): Nitrile
 Diaphragm material (High): Viton

Standard version

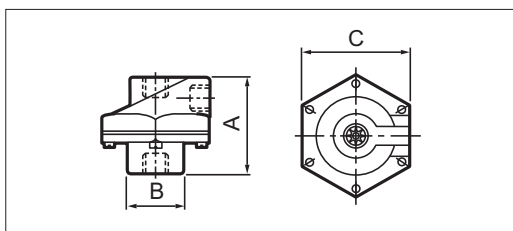


Port Size	Cv Rating	Weight kg	Order Code
G1/4	2,3	0,20	P4Q-BA12
G3/8	3,6	0,18	P4Q-BA13
G1/2	6,6	0,50	P4Q-CA14
G3/4	7,3	0,44	P4Q-CA16

High temperature version

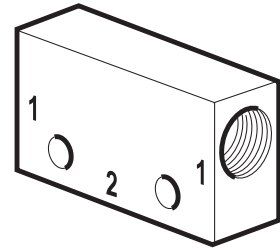
Port Size	Cv Rating	Weight kg	Order Code
G1/4	2,3	0,20	P4Q-BV12
G3/8	3,6	0,18	P4Q-BV13
G1/2	6,6	0,50	P4Q-CV14
G3/4	7,3	0,44	P4Q-CV16

Quick Exhaust Valves - Dimensions



Order code	Port Size	A	B	C
P4Q-B*12	G1/4	52	25	62
P4Q-B*13	G3/8	52	25	62
P4Q-B*14	G1/2	73	38	86
P4Q-B*16	G3/4	73	38	86

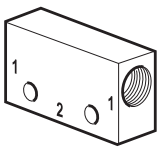
- Allows two separate signals to be applied to the air pilot
- 0,6 bar differential, Viton seals as standard



Operating information

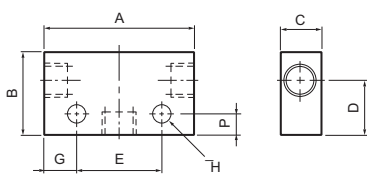
Operating pressure:	1,3 to 17 bar
Flow:	See table below
Operating temperature:	-10°C to +60°C
Body material M5 and G1/8:	Aluminium
Body material G1/4	Zinc
Shuttle ball material:	Plastic

Symbol



Port Size	Qmax input at 6 bar, l/min*	Weight kg	Order Code
M5	36	0,040	M33005
G1/8	509	0,100	B43005B
G1/4	1076	0,172	B53005A

Shuttle Valves - Dimensions



Order code	Port Size	A	B	C	D	E	F	G	H
M33005	M5	27,5	24	15	16,0	15	6	6,3	3,2
M43005B	G1/8	44,0	24	15	16,0	25	6	9,5	4,5
B53005A	G1/4	52,0	30	22	20,5	35	10	8,5	5,5